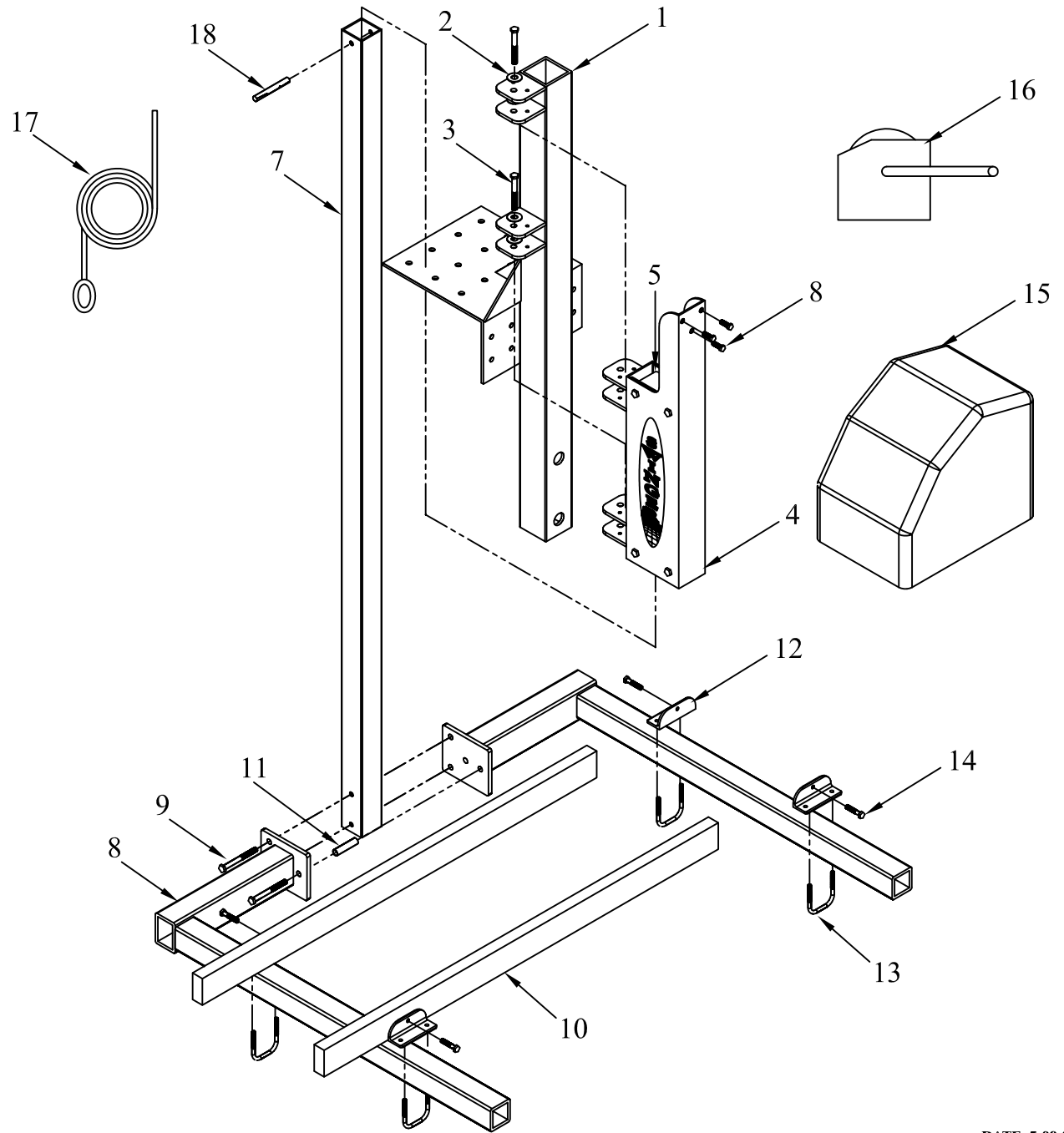


1000# SWINGER DOCK MOUNT PART BREAKDOWN

Part No.	Description
1	Dock Mt. Bracket
2	Swivel Bushings
3	5/8" x 4.5" Bolt
4	Housing
5	2" x 2.75" Roller
6	3/8" x 1.25" Bolts
7	Mast
8	Cradle Arms
9	5/8" x 5 1/2" Bolt
10	Bunk Board
11	Alum. 3" Spacer
12	Bunk Bracket
13	3/8 U-Bolt
14	3/8" x 3" Bolt
15	Electric Winch
16	Manual Hoist
17	1/4" Cable
18	Safety pin



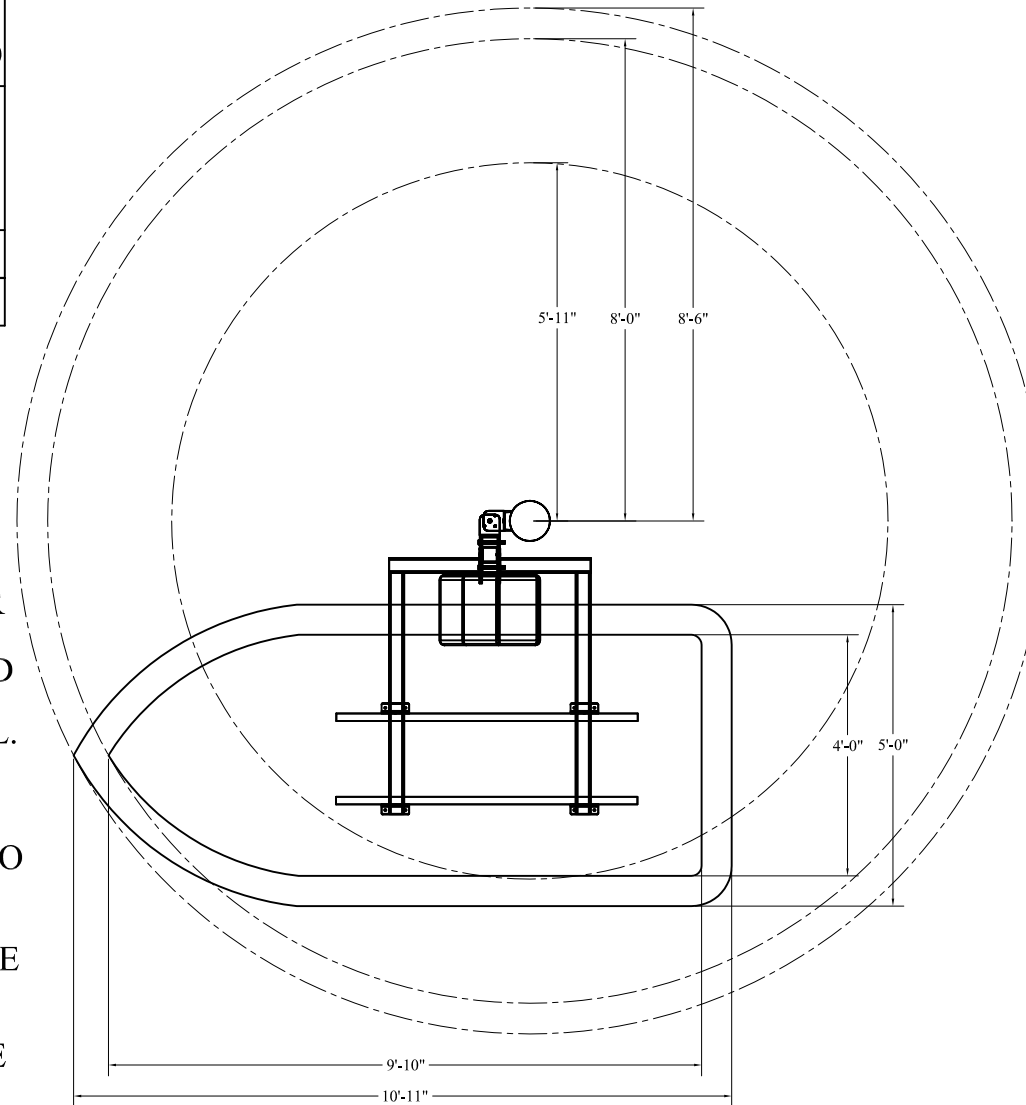
Note: Requires 20 Amp Service

DATE: 7-09-04

INFORMATION SHEET

LIFT SPECIFICATIONS	
PILING DIAMETER	8" MIN.
PILING HEIGHT ABOVE SURFACE	30" MIN. 32" PREFERRED
MAXIMUM WIDTH PERSONAL WATERCRAFT	60"
MAXIMUM WEIGHT	1000 lbs.
Lift Travel	8'

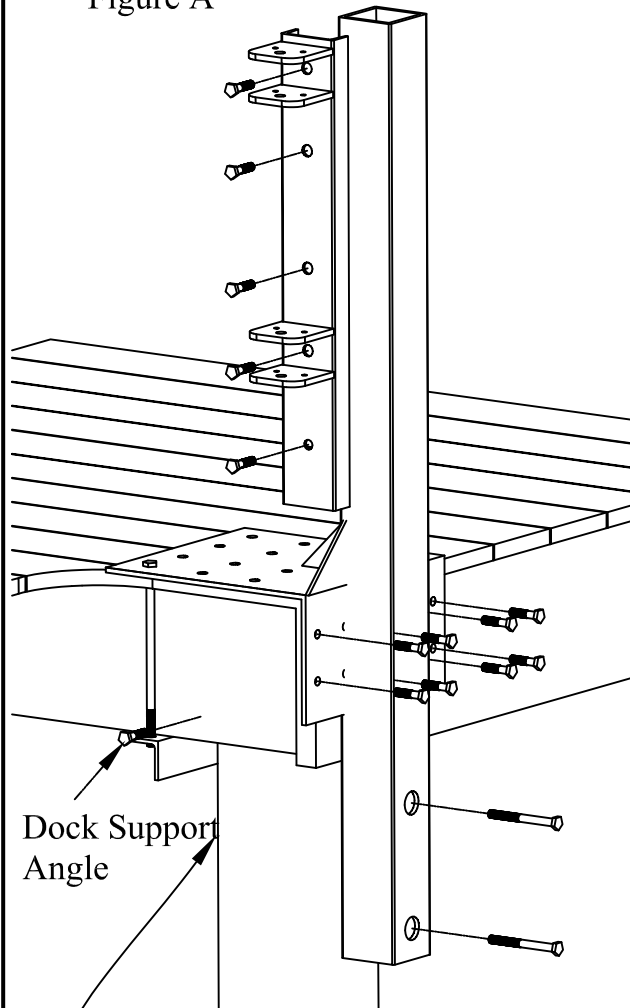
* TRAVEL IS MEASURED FROM THE BOTTOM OF THE SWINGER HOUSING TO THE BOTTOM OF THE ARM PLATE. EXTENDED MAST ARE AVAILABLE FOR FOR 2' OF ADDITIONAL TRAVEL. WHEN CHOOSING LOCATION FOR YOUR LIFT. MAKE SURE THE LOCATION OF THE PILING HAS ADEQUATE CLEARANCE TO ROTATE YOUR WATERCRAFT. REFER TO THE ILLUSTRATION FOR THE MINIMUM CLEARANCE REQUIRED TO ROTATE YOUR PERSONAL WATERCRAFT. THE PILING THAT YOU CHOOSE SHOULD BE SECURED TO THE DOCK, SEAWALL, OR BULKHEAD. THE LIFT WILL NOT OPERATE PROPERLY ATTACHED TO A FREE STANDING PILING.



STEP 1: SWINGER DOCK MOUNT INSTALLATION

Due to variation in piling diameter
5/8" bolts not supplied

Figure A



1. Place the dock mount bracket over the desired piling.
2. Make sure the top decking edge is flush with the outside stringer or piling. This will allow for a rigid mount. (You might have to route or bevel the ends of decking board to accommodate for the radius on the dock mount angle.)
3. Mark the desired hole pattern, making sure that the last four holes in the dock mount angle, on the top side of the dock are in position to line up with the support angle. The support angle should be positioned as shown in Figure A.
4. The eight holes in the face of the dock mount should be attached to the dock cross members as shown in Figure A.
5. Last the two holes in the dock mount tube should be bolted through the piling. You may need to use a piece of lumber to fill the space between the dock mount tube and the piling. Make sure the piling washers are used on the back side of the piling. As shown in figure B.



3"X3"X1/4" SQUARE WASHER

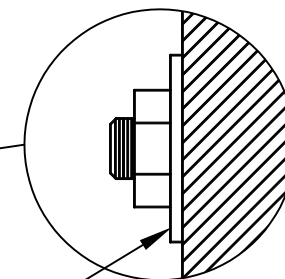
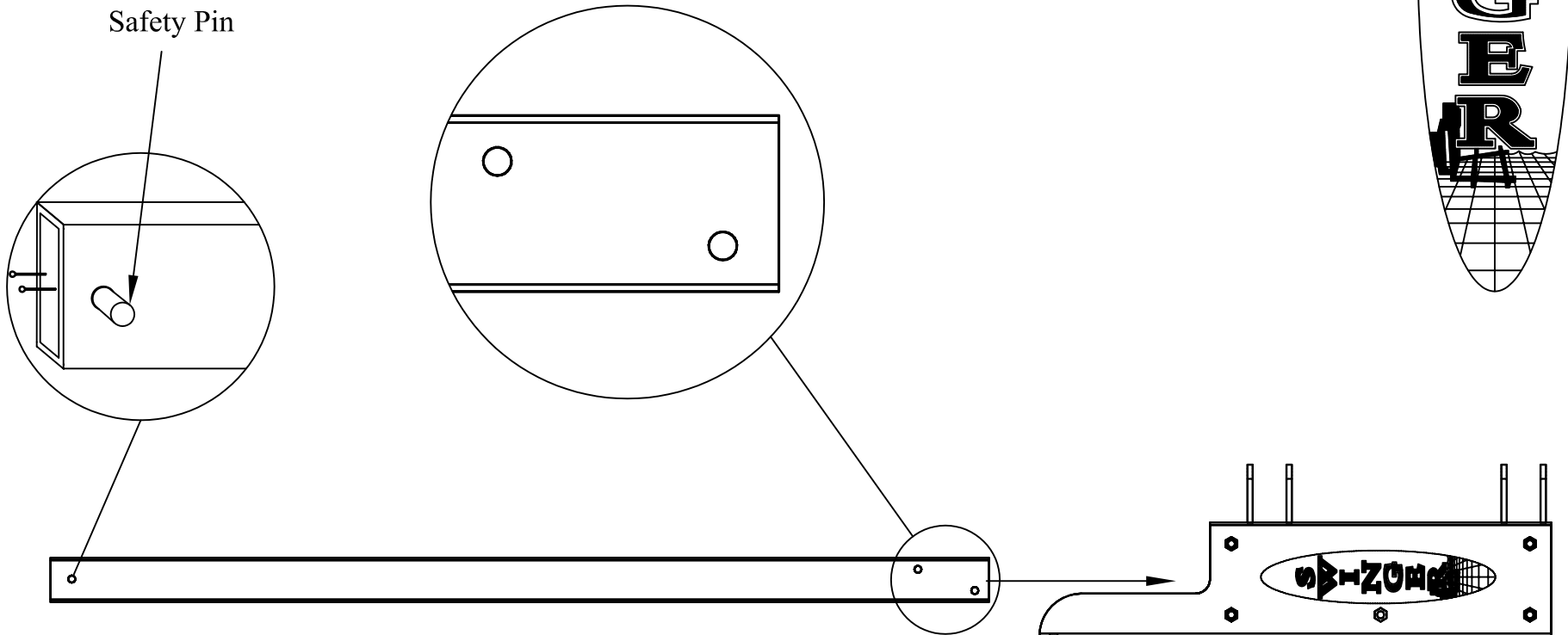


Figure B

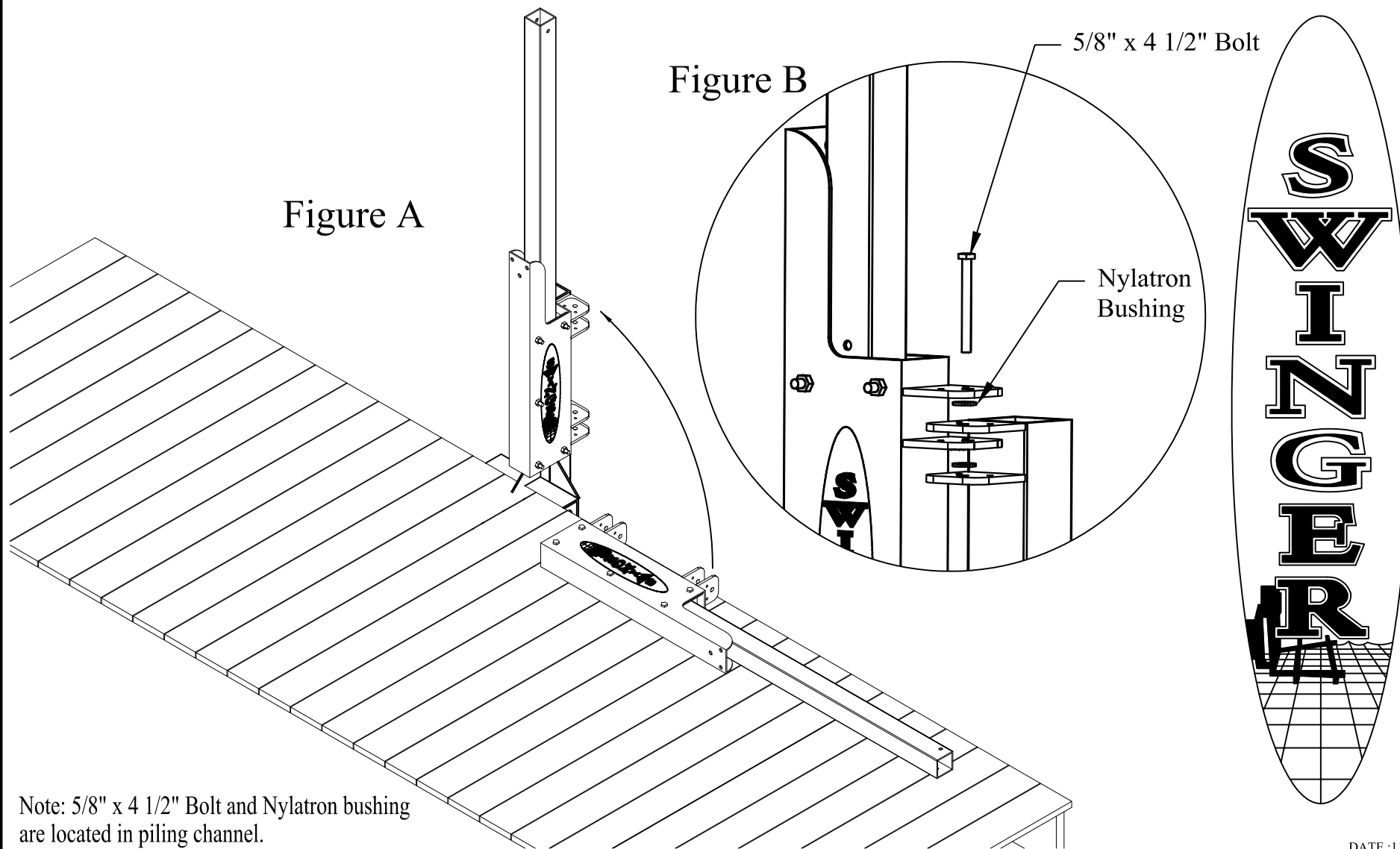
STEP 2: MAST INSTALLATION

1. Insert the mast into the top of the housing making sure that the two holes in the bottom of the mast are oriented as shown in the illustration below.
2. The two holes in the bottom of the mast are offset to provide rake support when the arms are attached and the load of the watercraft is applied. (Rake in arms is designed to compensate for cantilevered load.)
Note: If arms are tilted down, remove mast from housing, rotate 180 degrees and reinsert mast.



STEP 3: MAST INSTALLATION

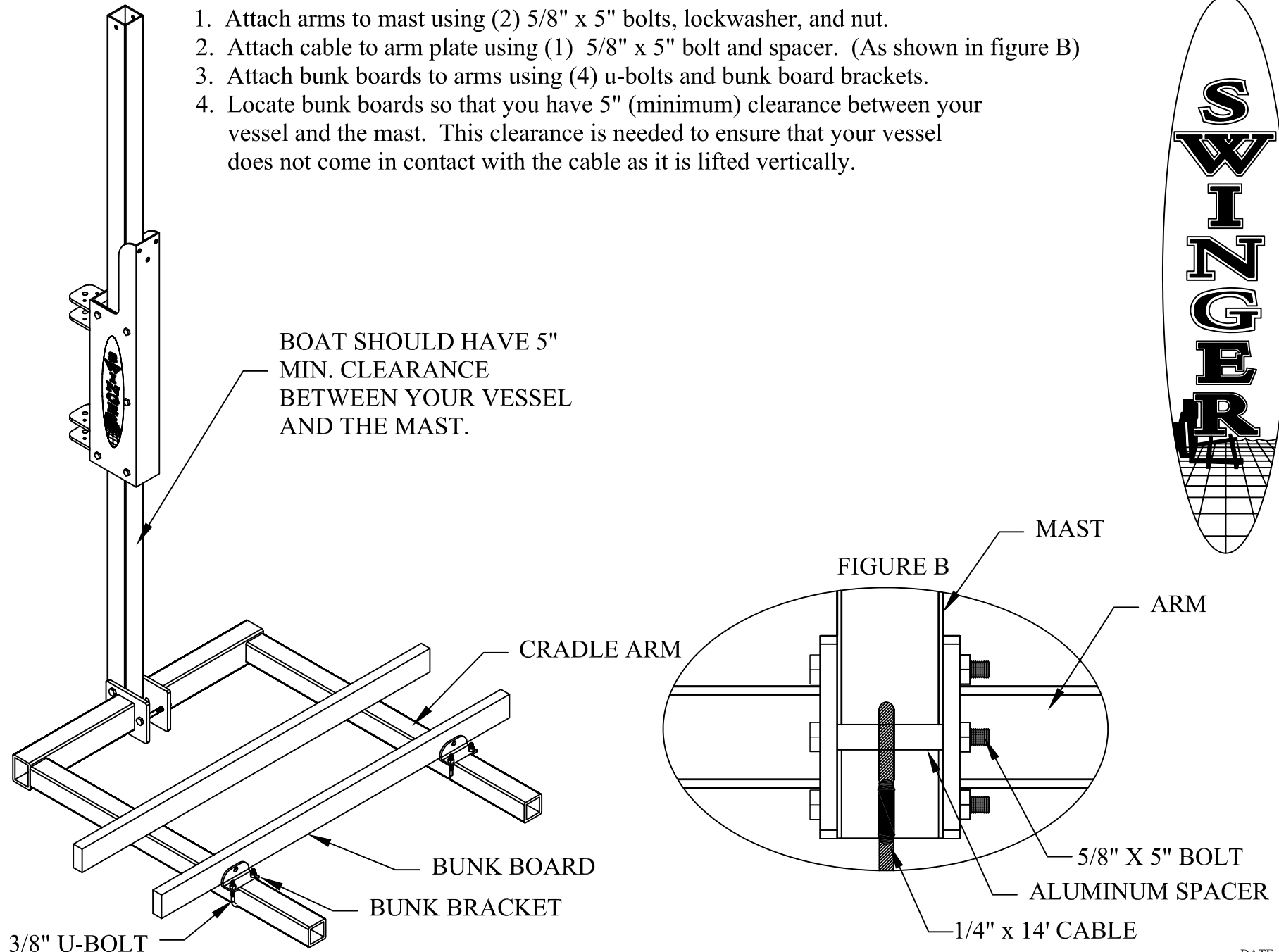
1. Position housing close to piling mount bracket, attached to piling.
2. Stand housing and mast assembly upright. (As shown in figure B)
3. Align swinger brackets on the housing above swinger brackets on the piling mount. (As shown in figure A)
4. Separate piling mount swivel hinges from housing swivel hinges using supplied nylatron bushing. (As shown in figure A)
5. Insert 5/8" x 4 1/2" bolts to secure housing and mast assembly to piling mount bracket . (As shown in figure A)



Note: 5/8" x 4 1/2" Bolt and Nylatron bushing are located in piling channel.

STEP 4: ARM & BUNK ASSEMBLY

1. Attach arms to mast using (2) 5/8" x 5" bolts, lockwasher, and nut.
2. Attach cable to arm plate using (1) 5/8" x 5" bolt and spacer. (As shown in figure B)
3. Attach bunk boards to arms using (4) u-bolts and bunk board brackets.
4. Locate bunk boards so that you have 5" (minimum) clearance between your vessel and the mast. This clearance is needed to ensure that your vessel does not come in contact with the cable as it is lifted vertically.



STEP 5: HOIST & CABLE ASSEMBLY

1. Attach cable to PSI drive unit by loosening set screw located in drive spool.
(Drive spool may have to be rotated before loosening. To rotate drive spool rotate large drive pulley with your hand until the spool is in the desired location.)
2. Insert cable into hole located to the inside of the drive spool.
3. After cable is inserted past the set screw, tighten set screw onto cable.
(Pull slightly on cable to ensure cable is secure)
4. Wind cable onto the spool by keeping tension on the cable and running drive in the upward motion. (Be sure cable is wrapped neatly on the cable spool.)

